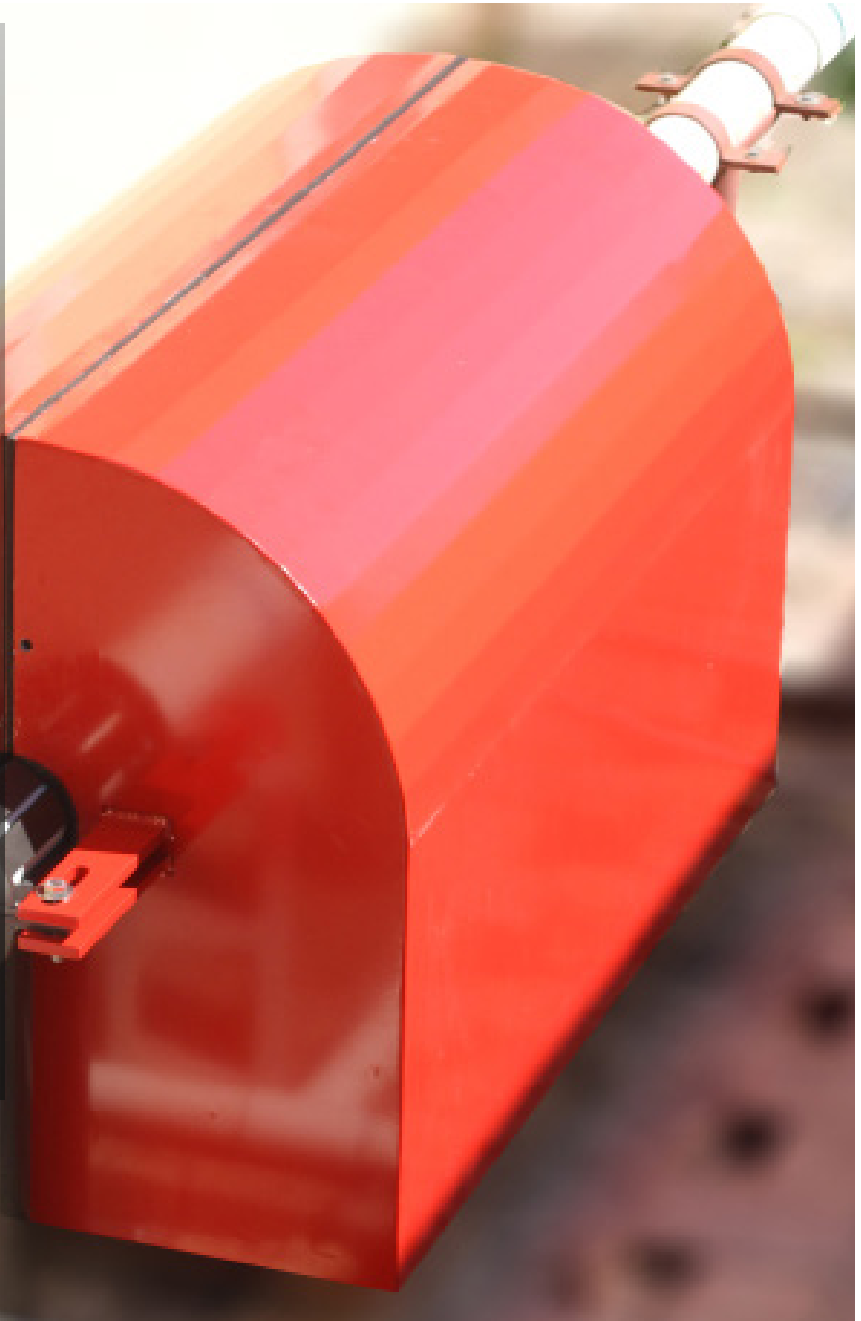


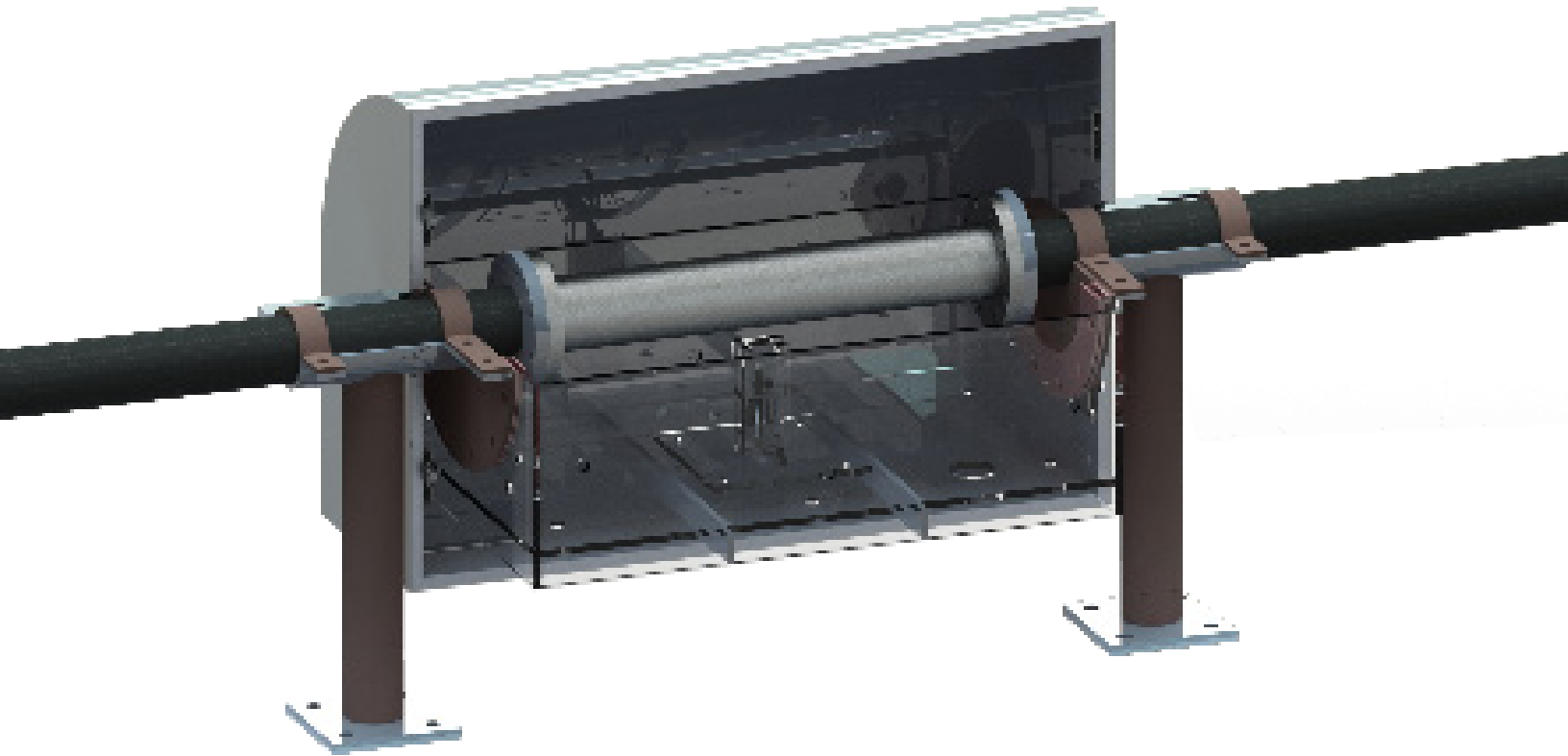
“

We set out to create the most accurate and reliable density meter available. After five years of extensive research and development under the guidance of process control instrumentation experts and leading industry consultants - it's finally here.

**0.1%****Repeatability
Reading****0.5%****Full Scale
Accuracy****45****Milisecond
Response**

PRINCIPLE OF OPERATION

The RM series of density meters uses the fundamental measurement of density: mass divided by volume. All media passes through a flexible in-line cartridge. This ensures that the full volume is being measured and not just a sample. Using a highly accurate laser, the RM series reads the change in deflection of the cartridge up to 3,000 times per second. As the weight change is measured within a fixed volume, the density is calculated. All legacy density meters currently on the market only provide an inferred reading based upon outdated principles.



Key Features

- Custom fit pipe
- Inner diameters 2" - 42" (50-1000mm)
- Full volume measurement
- Low natural frequency
- Constant monitoring capabilities
- Calibrated to multiple international standards (NIST, OIML, and ASTM)

Programmable Logic Controller

- Variable output display
- Graphic and numerical output
- Wet or dry totalized mass flow
- Wet density
- Wet or dry specific gravity
- Percentage of solids

RED METERS TECHNOLOGY

Our bespoke cartridge boasts a high rate of flexion making it ultra sensitive to changes in weight due to changes in density. In addition, it features a high rate of repeatability thanks to a patented design which allows the cartridge to quickly snap back to its original state. Changes in the cartridge's flexion are measured by a highly sensitive, industrial laser. **The patented high resistance cartridge boasts an abrasion resistant latex liner as standard to handle the most abrasive slurries.** The cartridge has a low natural frequency to promote vibration resistance giving you a clear reading of measurement data.



RED METERS TECHNOLOGY FEATURED IN



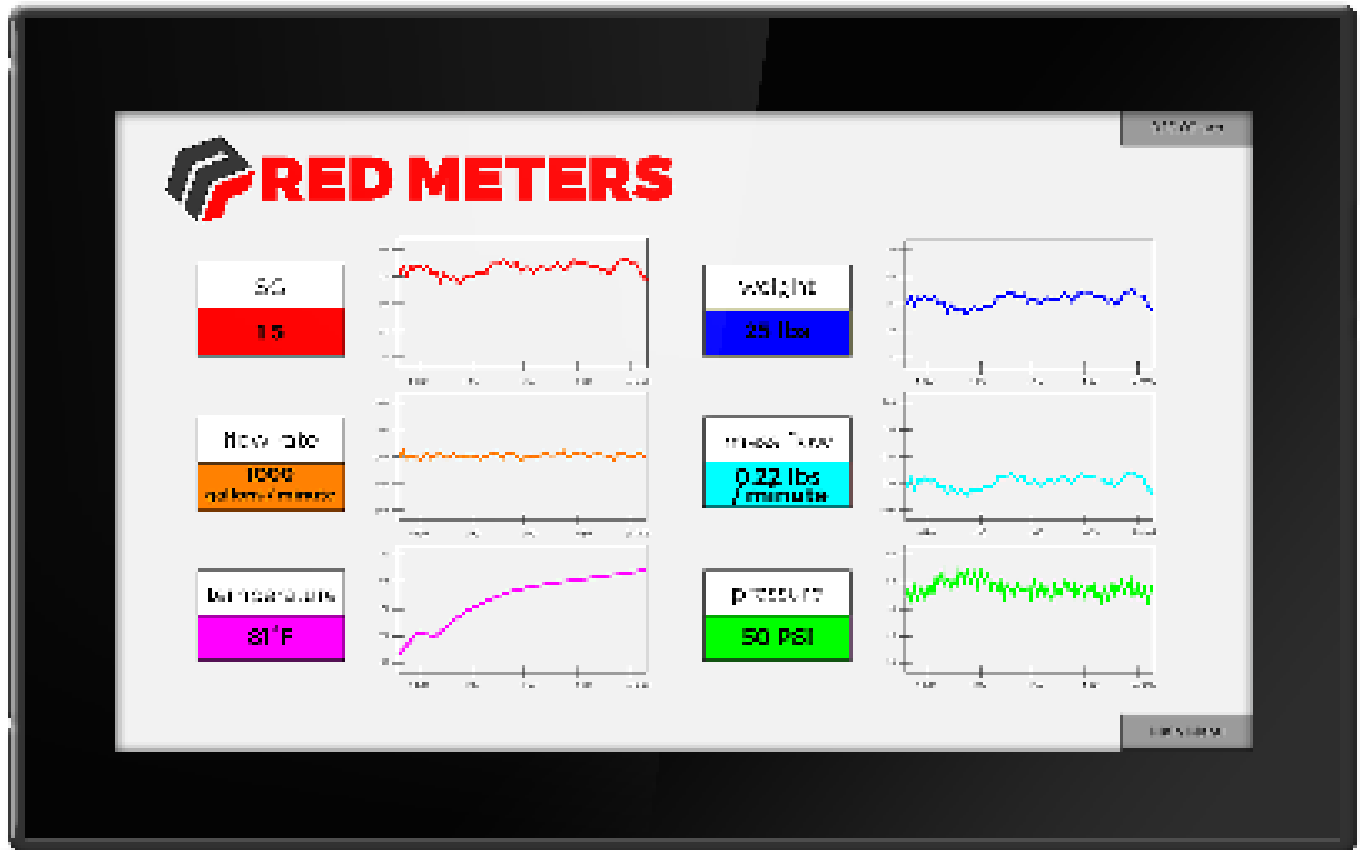
DredgingToday.com



Programmable Logic Controller

The HMI or Human Machine Interface is included with every Red Meters purchase, the 7" touch screen is laid out in a standard way out of the box with 6 numerical readings visible. You can determine which values you would like to see including Flow, density, pressure, % solid, Totalized Mass, etc. Graphical formats are also available, as well as the option to customise the HMI to its fullest extent including colors and specific data sets.

- Variable output display
- Wet or dry totalized mass flow
- Wet or dry specific gravity
- Graphic and numerical output
- Wet density
- Percentage of solids



Monitoring & Reporting



Your data is calculated using a variety of measurement sensors and compensation techniques. All sensors in the RM line report continuously as to achieve the fastest most precise reading possible. The physical weight reading is taken by a high precision displacement laser, calibrated to multiple international standards (NIST OIML, ASTM). We also use thermal and pressure sensors for our compensation algorithms. The algorithm uses a machine learning method, which allows us not only to achieve slight improvements in accuracy over the lifetime of the unit but also gives the user the added benefit of early problem detection.

**Our data calculations are simply:
density = mass / volume**

BESPOKE BUILD PER APPLICATION

Each RM Series is custom built for the specific requirements of your application before being shipped to your operation anywhere in the world.



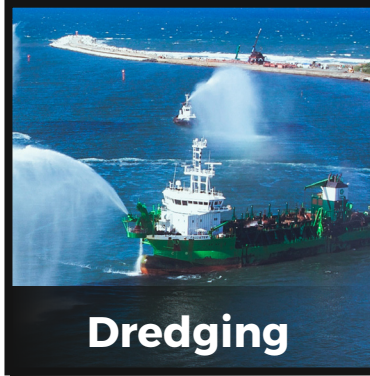
Average turnaround time is 6 weeks
with expedited delivery available.

SPECIFICATIONS

Weight Accuracy	99.7% of reading
Temperature Error Coefficient	5.8% / 10°C
Pressure Coefficient	0.1% / PSI
Repeatability	±0.1% of full scale
Linearity	±0.018% of full scale
Vibration Resistance	10-55 Hz
Specific Gravity Ranges	0.50-3.00+
Recommended Maximum Working Temperature	150° F (65° C)
Maximum Pressure	174psi (12 bar) (Safety Factor 3.3)
Minimum Temperature	32° F (0° C)
Sampling Rate	Up to 1000 times per second
Storage Temperature	-40° to 175° F (-40° to 80°C)
Environmental Protection	NEMA 4x and IP66
Flanged Connections	ANSI #150 ff and ANSI #150 BIRF
Standard Flow Tube Material	Internally reinforced flexible tan gum rubber, abrasion resistant liner
Explosion Proof Option	UL and CSA Class 1, Division 2
Laser Light Source	Class 2 (FDA (CDRH) Part 1040.10), Class 2 (IEC 60825-1)
Traceability	NIST, ASTM, and OIML
Housing Materials	Aluminum cage with aluminum skin (powder coated)
Wiring Materials	IFC standards; Gaskets: ASTM compliant; Glass Housing: Borosilicate tempered glass
Pipe Support Material	Carbon steel
Insulation Material	ASTM compliant

AN RM SERIES FOR ANY APPLICATION

Originally designed for Mining, Dredging and Wastewater applications, the Red Meters Series has yet to meet an application that wouldn't benefit from its accuracy, repeatability and ease of use.



ADDITIONAL APPLICATIONS

To date, we've worked with companies seeking to know the exact density of their processing in over 38 different applications. Each Red Meter is custom built to your project's unique objectives and specifications. Our engineering team will be happy to discuss your needs to determine if the Red Meter series is the right choice for your project. A few of our additional applications include:

- Drilling
- Food Processing
- Pulp and Paper
- Chemical Processing
- Construction
- Oil and Gas
- Sand and Gravel
- Cementing

Are you ready for Red Meters? Get in touch!



sales@redmeters.com



+1 407-337-0110